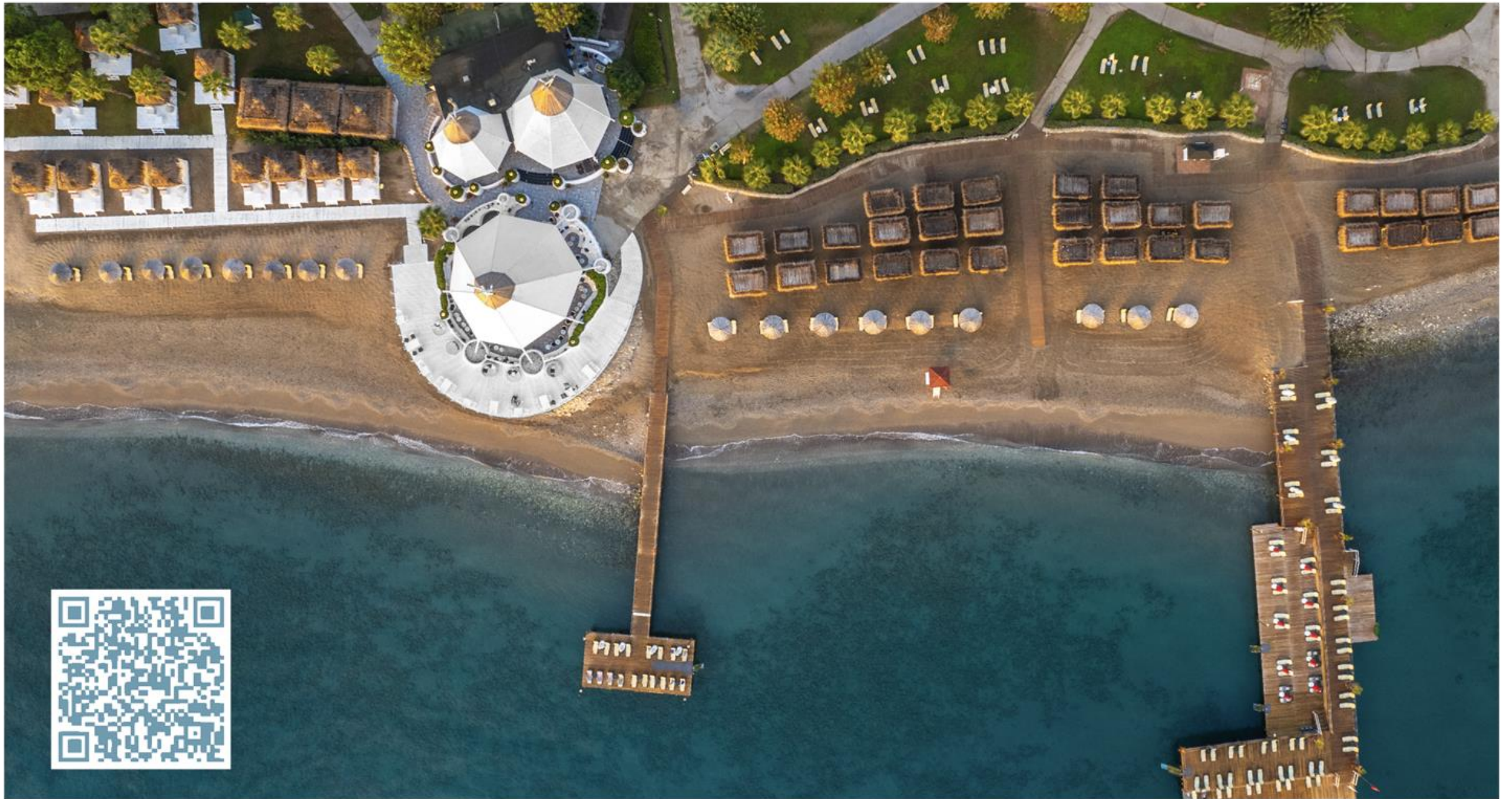


PALOMA
HOTELS

FORESTA

Summer 2024
Fact Sheet



PALOMA Foresta, Beldibi | Summer 2024 Fact Sheet



GENERAL INFORMATION

Official Category : 5 Star
Catalogue Category : 5 Star
Concept : Luxury Ultra All Inclusive
Year of Construction : 1989
Year of Restoration : 2015
Total Number of Rooms: 346 (4 panoramic lifts, 5 floors in the main building)
Credit cards : Visa, Master Card, American Express

LOCATION

Directly on the Beach
1 km to Beldibi Village center
18 km to Kemer
29 km to Antalya City
40 km to Antalya Airport

CONTACT INFO

Beldibi Mahallesi Başkomutan Atatürk Caddesi
No: 143/1 07985 Kemer - Antalya / TURKEY
P +90 242 824 84 31 | info@palomaforesta.com |
palomahotels.com

Our operation, such as meals and services, are adjusted according to the international and local rules and guidelines. Changes to hotel information, facilities, activities and services can occur for a variety of reasons. Paloma Hotels reserves the right to make changes without prior notice.



ALL-IN FOOD

Breakfast, lunch and dinner in the main restaurant buffet with seasonal organic food corner, fresh orange juice at breakfast

- Late breakfast at main restaurant 10:00 – 11:00
- Snack at Sunset Beach bar 12:30-17:00
- Ice cream served daily during lunch and dinner in the main restaurant
- Patisserie serving fresh pastries and cookies with coffee and tea
- Midnight dinner at main restaurant 23:00-01:00
- Late night snack 01:00-07:00
- **5 A'la Carte Restaurants - Reservation is required through Paloma Hotels App or Guest Relations.**

Seasons (International) free of charge

Ada - Aegean/Seafood - free of charge

Safran - Ottoman/Kebab - free of charge

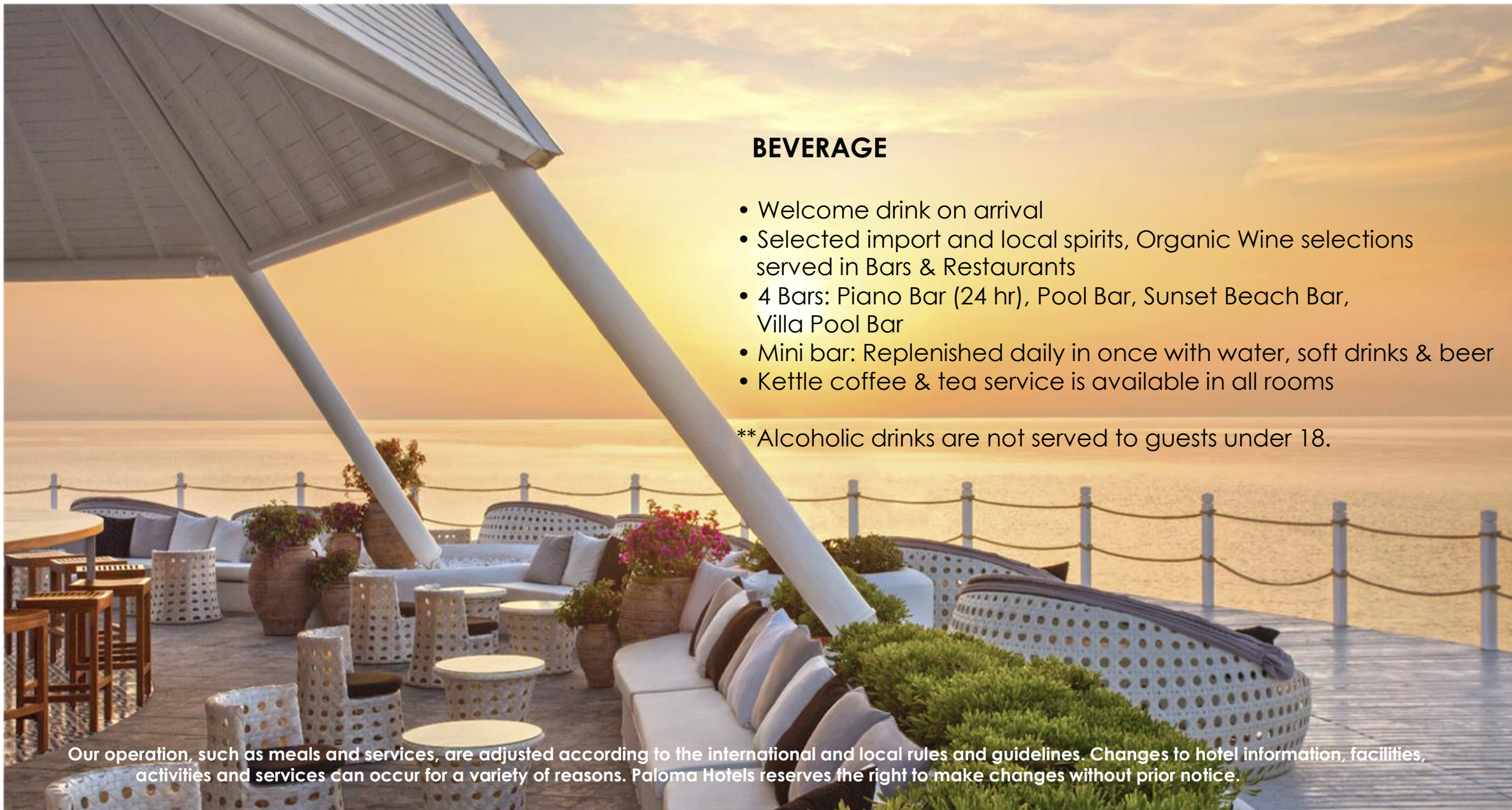
Lotus - Far East Cuisine - **with an extra charge**

Steakhouse - **with an extra charge**

- Beach & Pool Concept: Summer Coolers, fruits and small snacks served to the sun beds at the beach and pool area at certain times
- Food Festivals and Special Events Calendar is available
- **Kids' Chef:** Our Kids' Chef combines fresh and healthy products with entertainment to bring out nutritious and fun meals for our little guests.

- 24 hr room service with an extra charge. Orders can be made through Paloma Hotels App.

- 24 hr room service in Villa Duplex room, Executive Suits and Executive Deluxe Suits free of charge (except alcoholic drinks)



BEVERAGE

- Welcome drink on arrival
- Selected import and local spirits, Organic Wine selections served in Bars & Restaurants
- 4 Bars: Piano Bar (24 hr), Pool Bar, Sunset Beach Bar, Villa Pool Bar
- Mini bar: Replenished daily in once with water, soft drinks & beer
- Kettle coffee & tea service is available in all rooms

**Alcoholic drinks are not served to guests under 18.

Our operation, such as meals and services, are adjusted according to the international and local rules and guidelines. Changes to hotel information, facilities, activities and services can occur for a variety of reasons. Paloma Hotels reserves the right to make changes without prior notice.

BEACH&POOLS

Hotel owns sandy & pebble stone beach

Pools

3 Outdoor swimming pools

Activity Pool: 1400 m³ – from 140 cm deep

Relax Pool: 200 m³ – from 140 cm to 170 cm deep (+16 ages)

Children's Pool: 5 m³ - 50 cm deep

Villa Pool: 140 m³ - 140 cm deep, private use only by villa guest

Indoor Pool: 150 m³ - 160 cm deep (only winter season)

Aqua Park with 3 water slides,
Pool: 60 m³ - 100 cm deep

Towels, sun beds and sun shades are provided free of charge

Pool and Aquapark Regulations, which are determined according to International Standards, are available in the QR information system located in the rooms at our hotels.



Our operation, such as meals and services, are adjusted according to the international and local rules and guidelines. Changes to hotel information, facilities, activities and services can occur for a variety of reasons. Paloma Hotels reserves the right to make changes without prior notice.



ENTERTAINMENT & MINI CLUB & SPORT FACILITIES

VACATION INTO UNLIMITED FUN!

Palomotion welcomes you with a generous array of family-friendly activities and curated experiences. Have the time of your life at Paloma Hotels.

Daily Sport Activities: Beach volleyball, basketball, Tennis, Table tennis, mini football, Mini golf, Water Polo, Archery and Badminton, Yoga, Stretching, Fit Dance, Pilates, Step, Aerobics, Gymnastics, Total Body, Tabata, Trx, Water Gymnastics, Boccia, Backgammon, Card Games, Dart, Billiards, Shuffle Board

Entertainment: Live Music Bands, Animation Shows, Live Shows Night Club 23.00-01.00

Polly Kids Club: 10:00-17.00, age between 04-12 years
Kid's Welcome Package
Pool Games Kids' Animation Children's Playground Mini Disco

Teenage Club: 16.00-00.00 Age between 12-16 years, Social Corner, Xbox, Billiard, all in one and tablet computers, Lounge and game room

Fitness Center
+16 ages

Our operation, such as meals and services, are adjusted according to the international and local rules and guidelines. Changes to hotel information, facilities, activities and services can occur for a variety of reasons. Paloma Hotels reserves the right to make changes without prior notice.

OTHER FACILITIES & SERVICES

Shopping area
Nurse Service
Turkish bath, sauna
Complimentary WI-FI in rooms and public areas
Outdoor car park

SERVICES WITH CHARGE

Spa & Wellness: Spa Centre, beauty care, skin care, body care, facial care, massages, hydro therapies, special treatments
Land Sports: Tennis courts flood lights, tennis lessons, tennis racket & balls
Baby sitter service on request with an extra charge
Laundry, room service, international phone calls services with an extra charge
Doctor Service with an extra charge (on call)
Hairdresser with an extra charge
Private Beach Cabanas: between 09:00 - 18:00 with an extra charge

Reservation is required through Paloma Hotels App or Guest Relations.

All Day Service – Orders can be made from Cabana QR menu and Paloma Hotels App.



Our operation, such as meals and services, are adjusted according to the international and local rules and guidelines. Changes to hotel information, facilities, activities and services can occur for a variety of reasons. Paloma Hotels reserves the right to make changes without prior notice.

ACCOMMODATION PACKAGES



Villas & Executive Suite & Executive Deluxe Suite

- Fresh fruits and organic bottle of wine on arrival
 - Turndown service
 - Bathrobes, slippers
 - 24h room service without alcoholic beverages is free of charge
 - Priority reservations for A'la Carte Restaurants
 - Daily service of cookies for tea time at 17.00 h
 - Handicap Rooms: 4 Standard Rooms available on request.
- Room Door: 90 cm wide, 210 cm high. Bath Room Door: 87 cm wide, 210 cm high, Balcony Door: 74 cm wide, 201 cm high.

Family Comfort Package

Available in Garden Family rooms and Family Suites upon request

- Baby & Toddler Package (0-4): Bottle warmer, baby bath, baby cot, baby phone, bottle sterilizer and baby carriage are available on request (with deposit)
- Kid's welcome package: Activity bag with toys, coloring book, crayons.

Junior & Family Suites

- Fresh fruits and organic bottle of wine on arrival
- Turndown service
- Bathrobes and slippers

ACCOMMODATION	Standart Room	Standart Sea Side	Garden Family	Junior Suite	Junior Suite Sea View	Family Suite	Villa Duplex	Executive Deluxe Suite	Executive Family Suite	Executive Suite	Executive Standart
Total Rooms - 346	148	40	80	26	12	18	14	2	2	2	2
M ²	39 m ²	39 m ²	45 m ²	48 m ²	48 m ²	75 m ²	100 m ²	75 m ²	75 m ²	98 m ²	39 m ²
Minimum Pax	1	1	2	1	1	2	2	2	2	2	1
Maximum Pax	2 + 2	2 + 2	4	2	2	4	4 + 1	2+2	3 + 1	4 + 1	2 + 2
Sea - View	-	-	-	-	X	-	-	X	-	-	-
Sea - Side	-	X	-	-	-	-	-	-	-	-	-
Land Side	-	-	-	-	-	X	-	-	X	-	-
Garden - View	-	-	X	X	-	X	X	-	-	-	X
Mountain - View	X	-	-	X	-	-	-	-	-	X	X
Telephone (extra)	X	X	X	X	X	X	X	X	X	X	X
Flat TV - Satellite	2X	2X	2X	X	X	2 X	3 X	2 X	2 X	3 X	1
Hairdryer	X	X	X	X	X	X	X	X	X	X	X
WC	1	1	1	1	1	2	2	2	2	2	1
Bath & Shower	-	-	-	X	X	X	-	1	1	2	X
Walk-in Shower	X	X	X	X	X	X	X	1	1	-	-
Twin Bed	X	X	X	-	-	-	X	-	-	-	-
French Bed	X	X	X	X	X	X	X	X	X	X	X
Number of Bedrooms	1	1	1	1	1	1	2	1	1	2	1
Living room	-	-	1	-	-	1	1	1	1	1	-
Mini Bar	X	X	X	X	X	X	X	X	X	X	X
Kettle	X	X	X	X	X	X	X	X	X	X	X
Safe box (f.o.c.)	X	X	X	X	X	X	X	X	X	X	X
Central A/C & Heating	X	X	-	X	X	X	-	X	X	X	X
Split A/C & Heating	-	-	X	-	-	-	X	-	-	-	-
Seating Group	X	X	X	X	X	X	X	X	X	X	X
Balcony or Terrace	T or B	B	B	T or B	T & B	B	B	B	B	T & B	B
Carpet	-	-	-	-	-	-	-	X	X	X	X
Laminate Flooring	X	X	-	X	X	X	-	-	-	-	-
Traverten	-	-	X	-	-	-	X	-	-	-	-
Kitchen	-	-	-	-	-	-	X	-	-	-	-

Handicap Rooms: 4 Standard Rooms available on request.

Room Door: 90 cm wide, 210 cm high. Bath Room Door: 87 cm wide, 210 cm high, Balcony Door: 74 cm wide, 201 cm high.

Connecting door: 92 cm wide, 210 cm high. Lift: 110 cm wide, 210 cm high

MEETING ROOMS & FACILITIES & EQUIPMENTS



MEETING ROOMS	Area (m ²)	Height (m)	Theatre	Banquet	Classroom
Ballroom	770	4,26	800	600	450
Ballroom 4	414	4,26	300	200	230
Ballroom 2	181	4,26	120	80	60
Ballroom 3	181	4,26	120	80	60
Ballroom 2 & 3	360	4,26	250	160	130
Foresta Club	529	5,64	300	200	150
Boardroom	56	4,26	40	28	30
Olympos	112	2,40	80	40	48
Thermessos	112	2,40	80	40	48
Olympos 1	56	2,40	40	20	24
Thermessos 1	56	2,40	40	20	24
Olympos 2	56	2,40	40	20	24
Thermessos 2	56	2,40	40	20	24
Aspendos	47	4,20	50	32	24
Perge	60	4,20	75	40	32
Selge	41	4,20	42	24	20

- Technical equipment provided upon request
- Complimentary WIFI in all areas
- A/C system available

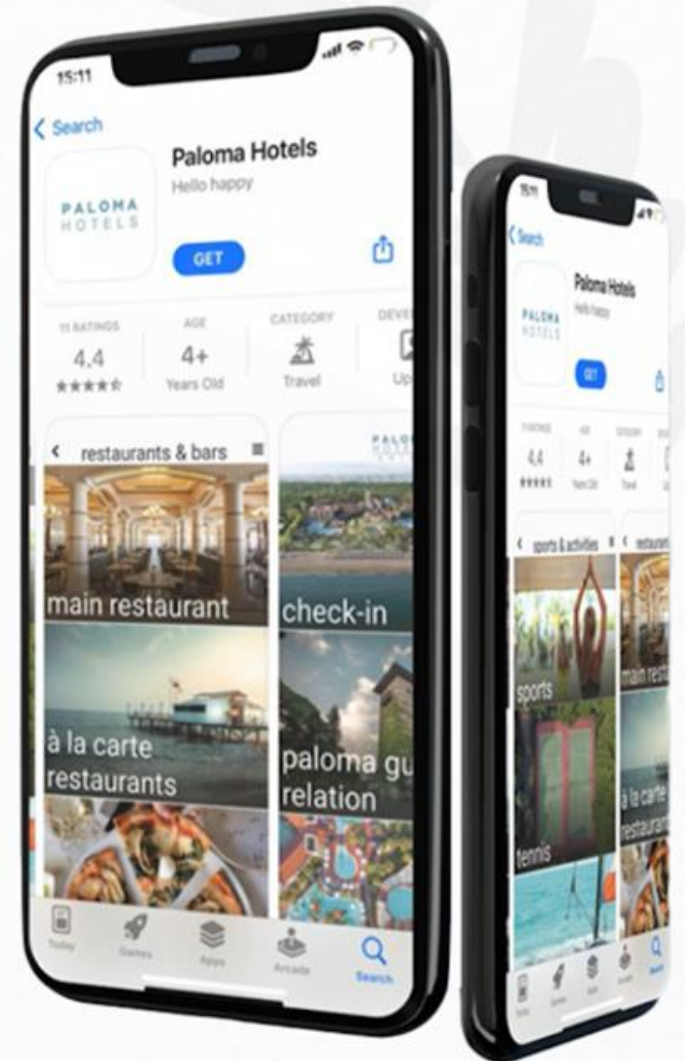
Our operation, such as meals and services, are adjusted according to the international and local rules and guidelines. Changes to hotel information, facilities, activities and services can occur for a variety of reasons. Paloma Hotels reserves the right to make changes without prior notice.

GO PAPER LESS

As Paloma Hotels, **we reduce paper waste** by offering all our services (hotel brochures, menus, hotel plan etc.) through **Paloma QR in rooms or Paloma Hotels mobile application.**

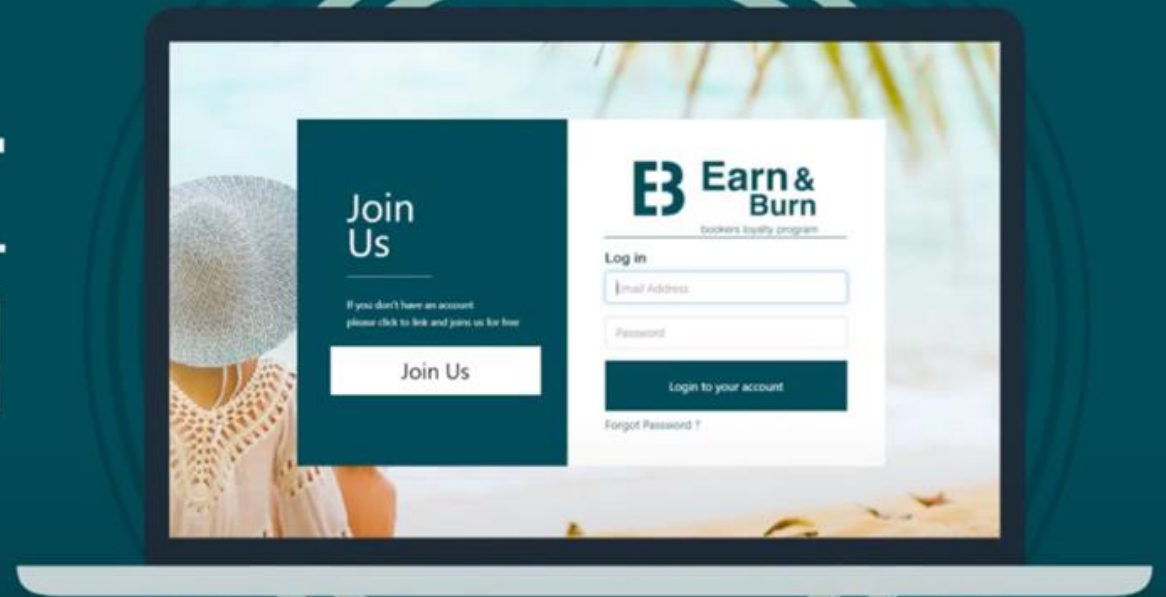
In addition, you can **view all the menus** and **make your reservation** for our **à la carte restaurants, place your 24-hour room service order and contact guest service** via Whatsapp chat through Paloma Hotels App.

SMART & USER-FRIENDLY PALOMA APP



Sign up on our website.
Start collecting your points.

Plan your own vacation!



PALOMA
HOTELS

FORESTA

Fact Sheet | Summer 2024

TURKEY

FINESSE SIDE
PALOMA OCEANA

• PALOMA ORENDA
• PALOMA FORESTA

• PALOMA PERISSIA
• PALOMA PASHA

• PALOMA GRIDA
• PALOMA MARINA SUITES

PALOMAHOTELS.COM



+90 850 440 00 00



@/PALOMAHOTELS